

## LD43DRG-C1

Deep Recessed LED Recessed Uplighter



Install sheet - Page 1

### SPECIFICATION

LED surfaced mounted luminaires are class III for Safety Extra Low Voltage **DC** supply. The product should only be used with a supplied or LightGraphix approved **350mA, 500mA or 700mA** constant current driver.

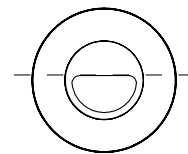
**Suitable for mounting on normally flammable surfaces.**

Lamp: **C1 LED Engine.**  
This fitting is **IP66** rated.  
Lumen Maintenance: L90B5 at 90,000hrs.

**/GS44-45**

45% reduced output glare shield

LD43DRG - C1			
Product & LED Output Code	Power Output	Max Ambient	Energy Class
LD43DRG-C1-350	350mA 1.2W	-20° to 50°	E
LD43DRG-C1-500	500mA 1.7W	-20° to 50°	E
LD43DRG-C1-700	700mA 2.4W	-20° to 50°	F

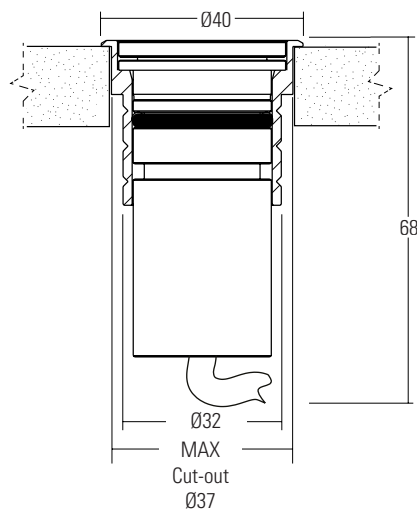


Wall/Lit Surface

### INSTALLATION

**/480TR-G**

Glass Top Trim Sleeve



1. Bore clearance hole (**MAX Ø37 Cut-out**) to suit dimensions below.
2. When using /480TR-G Fixing Sleeve. Bond in sleeve into the cut-out with one of the recommended adhesives; Rotabond 2000, 3M 4200 Marine Adhesive or Simson MSR Construction Adhesive.
3. Wire the luminaire to a specified driver.  
NOTE: When connections are to be made in wet environments, make IP68 connection to stop water travelling up the cables into the fittings! Refer to IP connection sheet for further details.
4. **Ensure fitting has x1 O-ring only. Grease O-ring with a heavy duty, silicone-free grease.** Failure to do so could hamper removal and cause damage. **Interior of sleeve must be free from any adhesive/ dust before pushing in fitting.**  
When installing with a glare shield, align fitting to desired orientation. Push the luminaire into the sleeve until flush with surface.
5. Confirm installation was successful by powering up the fitting. If there is no light output, switch off power immediately and verify wiring.

## LD43DRG-C1

Deep Recessed LED Recessed Uplighter

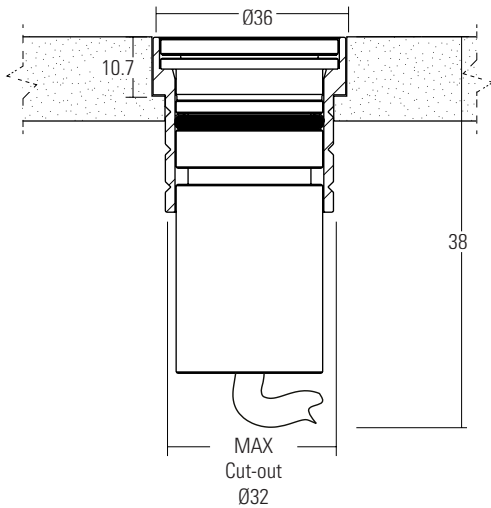


Install sheet - Page 2

### SPECIFICATION

#### /480S-G

Glass Top Rebate Sleeve



### INSTALLATION

1. Bore clearance hole (**MAX Ø32 Cut-out**) to suit dimensions below.

2. When using /480S-G Fixing Sleeve, rebate the cut out hole, leaving 2.5mm ledge for the sleeve (recommended to use 24mm Rebater tool with 19mm bearing). If larger rebate is required, use alternative bearing. Rebate depth is 10.7mm. Bond in sleeve into the cut-out with one of the recommended adhesives; Rotabond 2000, 3M 4200 Marine Adhesive or Simson MSR Construction Adhesive. Ensure sleeve is flush with surface.

3. Wire the luminaire to a specified driver.

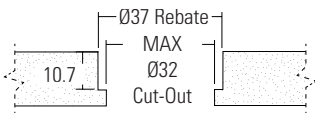
**NOTE:** When connections are to be made in wet environments. Make IP68 connection to stop water travelling up the cables into the fittings! Refer to IP connection sheet for further details.

4. **Ensure fitting has x1 O-ring only. Grease O-ring with a heavy duty, silicone-free grease.** Failure to do so could hamper removal and cause damage. **Interior of sleeve must be free from any adhesive/ dust before pushing in fitting.**

When installing with a glare shield align fitting to desired orientation. Push the luminaire into the sleeve until flush with surface.

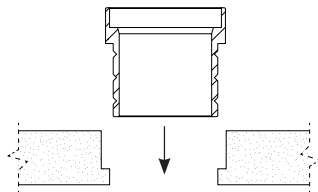
5. Confirm installation was successful by powering up the fitting. If there is no light output, switch off power immediately and verify wiring.

1.

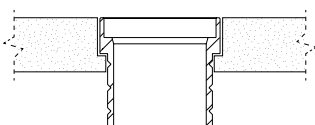


\*MIN material thickness 14mm based on MDF. Ensure is material harness and density is suitable of rebating

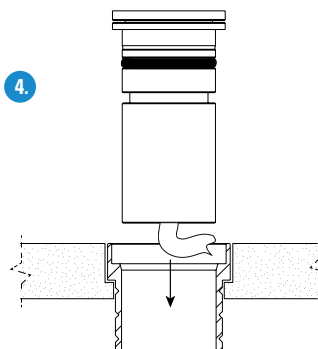
2.



3.



4.



## LD43DRG-C1

Deep Recessed LED Recessed Uplighter

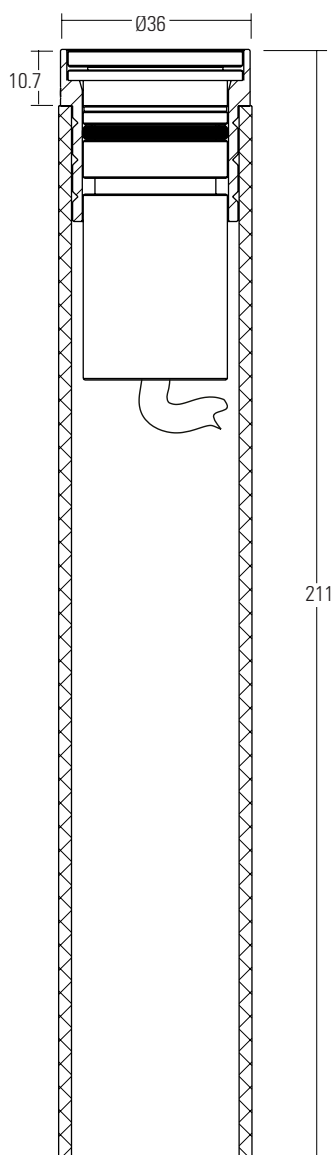


Install sheet - Page 3

### SPECIFICATION

#### /480GT-G

Glass Top Ground Tube



### INSTALLATION

1. Place the concrete can/ground tube into the prepared area/cavity, this must be level. If the housing/tube requires bolster, ensure it is supported. Feed power cable through the hole. Allow enough excess cable for the connection required to the fitting, and to allow for the fitting to be removed from its housing.

2. The Ground tube accessory is designed to be used primarily within concrete. They can be used in areas with loose / soft substrate but they must only be used within concrete for load bearing applications. Failure to do so, will cause structural and IP failure. If a secondary surface is going to be used ensure the concrete is offset by the specified material thickness.

3. Pour concrete around ground tube and sleeve. When pouring ensure as little material falls into the can as possible.

4. Wire the luminaire to a specified driver.

**NOTE:** When connections are to be made in wet environments. Make IP68 connection to stop water travelling up the cables into the fittings! Refer to IP connection sheet for further details.

5. Make sure the inside of the fixing sleeve and the outside of the luminaire is free from grit and dirt.

6. **Ensure fitting has x1 O-ring only. Grease O-ring with a heavy duty, silicone-free grease.** Failure to do so could hamper removal and cause damage. **Interior of sleeve must be free from any adhesive/ dust before pushing in fitting.**

When installing with a glare shield align fitting to desired orientation. Push the luminaire into the sleeve until flush with surface.

7. Confirm installation was successful by powering up the fitting. If there is no light output, switch off power immediately and verify wiring.

## LD43DRG-C1

Deep Recessed LED Recessed Uplighter



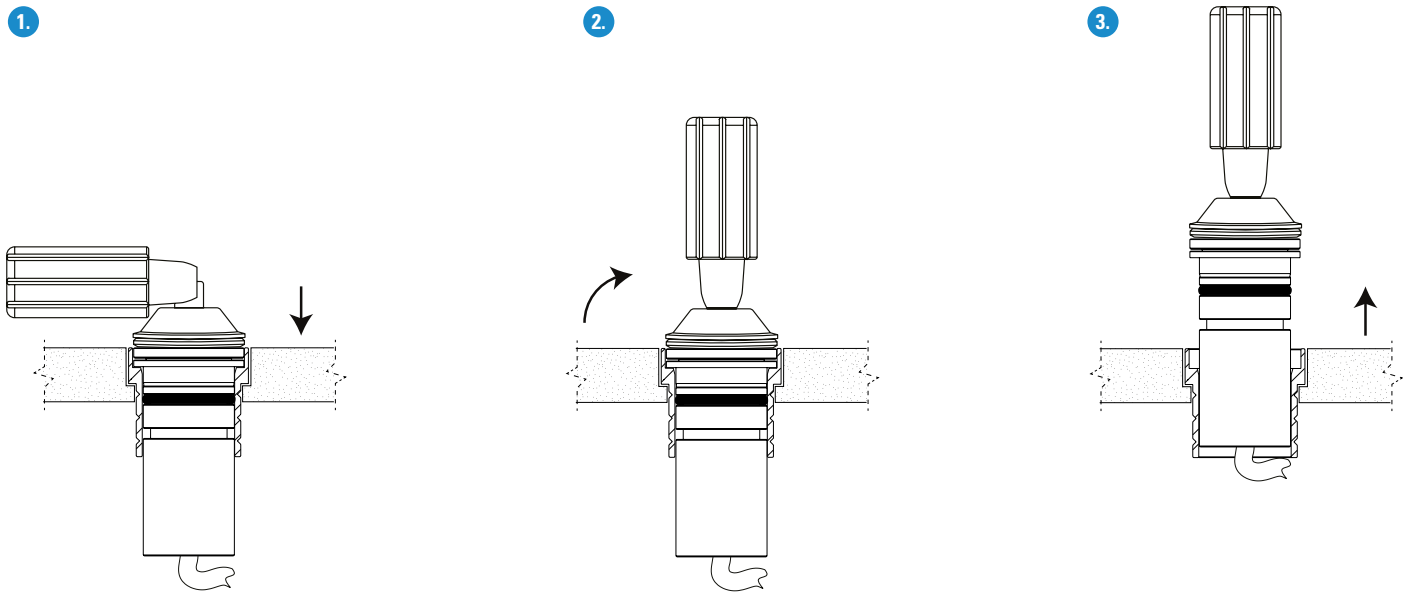
Install sheet - Page 4

### REMOVAL

Use /HT-44-G suction cup to remove fitting.

1. Push tool firmly on top of fitting as per diagram
2. Rotate arm into vertical position.
3. Ensure suction cup is securely on glass and pull up to remove.

**NOTE: Do not insert/use and dissimilar tool around edge of glass for removal as this will damage glass and/or void seal.**



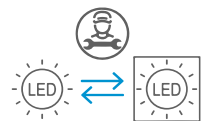
### SEE CONSTANT CURRENT WIRING SHEET FOR IN SERIES WIRING DIAGRAM

Do not power up until fitting is wired correctly! Constant current LEDs must be wired in series, polarity is critical. Please refer to specified driver sheet for details on the minimum and maximum number of LEDs per circuit.

CORE COLOUR & POLARITY		
Colour of Cable	Red	Black
Polarity	+	-

### END OF LIFE

This fitting contains a replaceable (LED only) light source, that must be replaced by a professional. If the product has come to the end of its life or is in need of repair please contact LightGraphix or your preferred recycling scheme.



### IMPORTANT

Make sure that all cables and connections are securely connected before switching on the power. Failing to do this can lead to failure of the LEDs and/or the driver. If the LEDs do not work upon power up, turn off the power source immediately and check the polarity of the wiring. Any attempt made to open up and/or modify the luminaire will invalidate the manufacturers warranty. The external cable of this luminaire cannot be replaced; if the cable is damaged the luminaire shall be destroyed. This is inclusive of but not limited to removal of the LightGraphix product label or removal of any parts from the main body of the product including bezels, electrical components and factory fitted fixing methods (unless otherwise stated in these instructions). Luminaire should be wired no further than 30 meters away from a SELV constant current LED driver (based on a 1mm squared cross sectional cable). Forward voltage of luminaire is 18VDC, if wired in series UOUT of LED driver and luminaire circuit should not exceed 60VDC. Terminal block not included. Installation must be performed by a qualified person. For connections made in dry environments 2 x Wago 221-2411 or connections with similar specifications are recommended. For damp or wet environments a connector of the same electrical specification but with a suitable IP rating should be used. The fitting guarantees a minimum static load resistance of 5kN. The rated maximum surface temperature is less than 100°C.

### MAINTENANCE

Clean with soft damp cloth  
LED: Please contact LightGraphix  
O-ring replacement part numbers: Outer O-ring 17.0010.

### CONNECTION

- Wire Connection Method: Clamp
- No. of Positions: 1Way
- Rated Voltage: 450V
- Rated Current: 32A
- Wire Size (stranded): 18 - 14AWG